

A

B

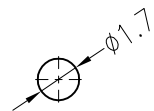
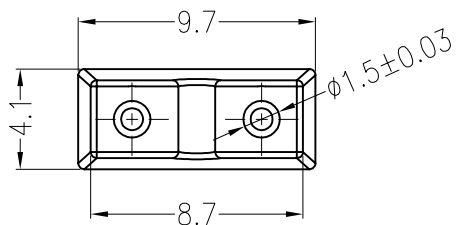
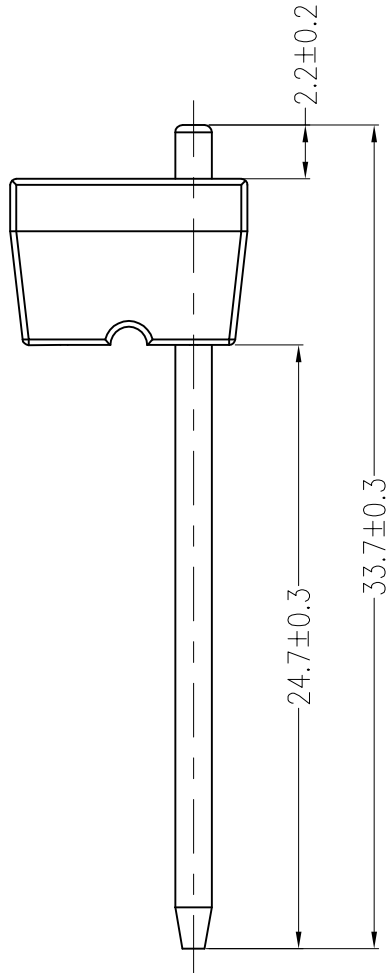
C

D

E

F

REV	ECN No.	DESCRIPTION	DESIGN	DATE
A0		Release	吴丹平	2017.04.21



Board Layout

主要技术参数 Main Specifications

线 数 (Poles): 02

接触电阻 (Contact resistance):  $\leq 20m\Omega$ 绝缘电阻 (Insulation resistance):  $\geq 1000M\Omega$ 

额定电压 (Rated voltage): 250V AC DC

额定电流 (Rated current): 3.0A AC DC

耐 电压 (Withstand Voltage): 1800V AC/minute

温度范围 (Temperature Range) :  $-40^{\circ}C \sim +110^{\circ}C$ ORDER INFORMATION:

<b>L025B-02-B1MG2-P-1</b>	
PART No.	SPECIAL CODE: 1=直针24.7*2.2
No. FOR CIRCUITS: 02	PACKAGING: P=PE Metal code: 2=Brass
PLASTIC MATERIAL: B1M=PA46 (BEIGE)	PLATING: G=Ni

C				
B	CONTACT	1 PCS	Brass	Ni-plated
A	HOUSING	1 PCS	PA46	UL 94V-0, COLOR:BEIGE
ITEM	COMPONENT	Q'TY	MATERIAL	FINISH
<b>JKUN 温州健坤接插件有限公司</b> WENZHOU JKUN CONNECTOR CO.,LTD.				TITLE: L025B-02-1P 5.3Pitch 180°wafer dip type
X.±0.5	X.±5'	USE:	CUSTOMER	
.X±0.3	.X±2'	APPD:	邵敬和	
.XX±0.25	.XX±1'	CHKD:	田 峰	
--	--	DR:	吴丹平	
	UNITS:	mm	SCALE	SHEET
			1 : 1	1 / 1

1

2

3

4

5

1

2

3

4

5

A

B

C

D

E

F