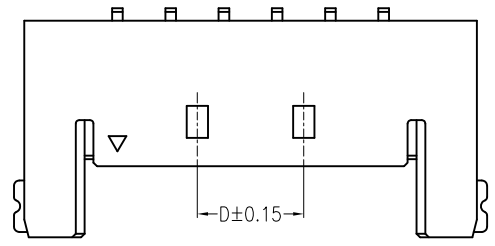
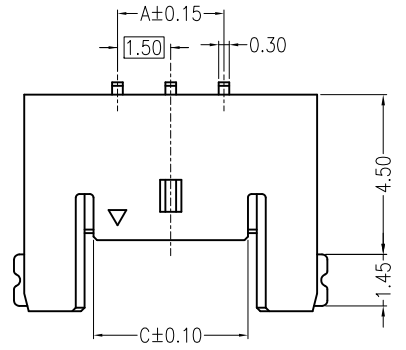


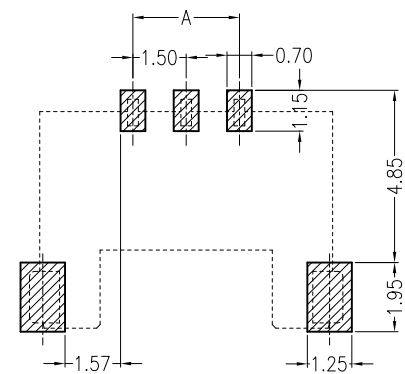
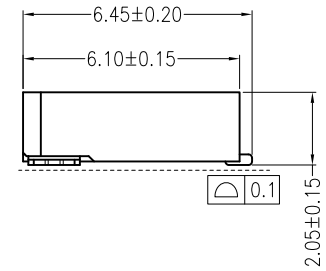
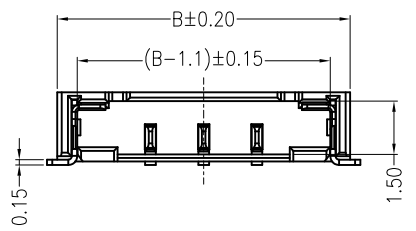
REV	DESCRIPTION	DESIGN	DATE
A	NEW RELEASE	Lingqing	2020/11/20



05P~12P Double Opening

Specifications:

- Contact resistance: $\leq 20m\Omega$
- Insulation resistance: $\geq 1000M\Omega$
- Rated voltage: 150V AC DC
- Rated current: 3.0A AC DC
- Withstand Voltage: 500V AC/minute
- Temperature Range: $-25^{\circ}C \sim +85^{\circ}C$
- Housing: PA4T UL94V-0, Black
- Contacts: Phosphor bronze Gold
- Solder Tabs: Phosphor bronze Matte Sn



SUGGESTED PCB LAYOUT

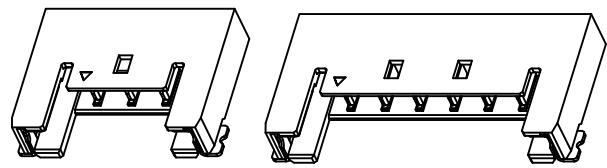
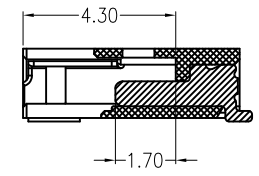
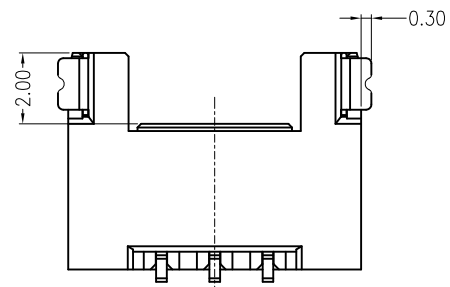
Circuits	Dimensions (mm)			
	A	B	C	D
02	1.50	6.75	2.85	
03	3.00	8.25	4.35	
04	4.50	9.75	5.85	
05	6.00	11.25	7.35	3.00
06	7.50	12.75	8.85	3.00
07	9.00	14.25	10.35	4.50
08	10.50	15.75	11.85	6.00
09	12.00	17.25	13.35	7.50
10	13.50	18.75	14.85	9.00
11	15.00	20.25	16.35	10.50
*12	16.50	21.75	17.85	12.00

ORDER INFORMATION:

A1503AWR-**-J1KC1-R

PART No. _____
 No. OF CIRCUITS: _____
 02~12
 PLASTIC MATERIAL: _____
 J1K=PA4T(Black)

PACKAGING:
 R=REEL
 Metal code:
 1=Phosphor Bronze
 PLATING:
 C=Gold



JKUN 温州健坤接插件有限公司 WENZHOU JKUN CONNECTOR CO.,LTD.		TITLE: 1.50 Pitch Wafer 90° SMT	
GENERAL TOLERANCE		USE: CUSTOMER	PART NO.:
X. ±0.50	X. ±5°	APPD: WangFeng	A1503AWR-**-J1KC1-R
X.X ±0.30	X.X ±2°	CHKD: Shaojinghe	DWG NO.:
X.XX ±0.20	X.XX ±1°	DR: Zenglingqing	JKUN-GCKH-0766
UNITS: mm		SCALE 1 : 1	SHEET 1 / 1